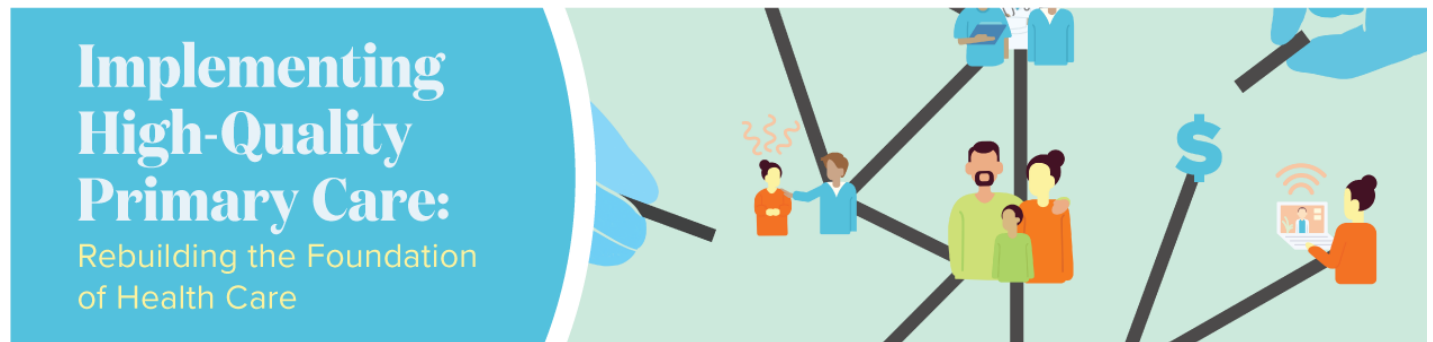


SHARE [f](#) [t](#) [in](#) [✉](#)

Implementing High-Quality Primary Care



An ad hoc committee, under the auspices of the National Academy of Sciences, Engineering, and Medicine, will examine the current state of primary care in the United States and develop an implementation plan to build upon the recommendations from the 1996 IOM report, "Primary Care: America's Health in a New Era", to strengthen primary care services in the United States, especially for underserved populations, and to inform primary care systems around the world.

[🗨](#) Provide feedback on this project

SIGN UP TO LEARN MORE ABOUT THE STUDY

SUBSCRIBE

By clicking subscribe I agree to the Academies Privacy Policy

Publications

2021

Implementing High-Quality Primary Care: Rebuilding the Foundation of Health

RESOURCES

- [📄 Report Highlights](#)
- [📄 Policy Brief: Payment Reform](#)

This site uses cookies. For more information on cookies visit:

<https://www.nationalacademies.org/legal/privacy>



care system. It provides continuous, person-centered, relationship-based care that considers the needs and preferences of individuals, families, and communities. Without access to high-quality primary care, minor health problems can spiral into chronic disease, chronic disease management becomes difficult and uncoordinated, visits to emergency departments increase, preventive care lags, and health care spending soars to unsustainable levels.

[Read Full Description](#)

- [Policy Brief: Train Primary Care Teams](#)

- [Policy Brief: Advance Digital Health](#)

- [Policy Brief: Ensure Implementation](#)

- [Communications Toolkit](#)

- [Press Release](#)

[View Report](#)

Communications Toolkit

Twitter

Tweet this!

#Primarycare is foundational to our #healthcare system and critical to achieving #healthequity – says new report from @NASEM_Health. #primarycarestudy Learn more:

This site uses cookies. For more information on cookies visit:

<https://www.nationalacademies.org/legal/privacy>

High-quality #primarycare should be available to every individual in the U.S. Learn more from new @NASEM_Health #primarycarestudy, out now: <http://bit.ly/NASEMprimarycarestudy>

Tweet this!

#Primarycare provides > 1/3 of all #healthcare visits in the U.S. but it faces chronic underinvestment, has no federal coordinating capacity, no dedicated research support, shrinking workforce pipeline. More from new @NASEM_Health #primarycarestudy report: <http://bit.ly/NASEMprimarycarestudy>

Tweet this!

If more people have easy access to high-quality #primarycare, we'd have a healthier population and more equitable outcomes. No other part of #healthcare can make this claim. More in new @NASEM_Health #primarycarestudy report: <http://bit.ly/NASEMprimarycarestudy>

Tweet this!

We know what high-quality #primarycare looks like— strong relationships between care-teams & individuals, families, and communities, tailored to needs, delivered across settings. Now we have to scale it. More in new @NASEM_Health #primarycarestudy report: <http://bit.ly/NASEMprimarycarestudy>

Tweet this!

The U.S. is losing ground on #healthequity, especially life expectancy. Research suggests part of the reason is lack of high-quality #primarycare. Learn more about implementing high-quality primary care – in new @NASEM_Health report: <http://bit.ly/NASEMprimarycarestudy> #primarycarestudy

Tweet this!

New report from @NASEM_Health on high-quality #primarycare calls for payment reform, #telehealth expansion, state & federal policy changes to improve access to primary care. #primarycarestudy Learn more: <http://bit.ly/NASEMprimarycarestudy>

Tweet this!

New @NASEM_Health #primarycarestudy report says everyone should have access to high-quality #primarycare that is supported by responsible public policy and private-sector action. #healthequity More: <http://bit.ly/NASEMprimarycarestudy>

Tweet this!

The #primarycare workforce needs better training and support for integrated, team-based care to improve access and #healthequity. More in new #primarycarestudy report from @NASEM_Health <http://bit.ly/NASEMprimarycarestudy>

Tweet this!

This site uses cookies. For more information on cookies visit:

<https://www.nationalacademies.org/legal/privacy>

Tweet this!

#Primarycare teams should partner with community organizations and public health agencies to meet the specific needs of the patients, families, and communities they serve – learn more in a new @NASEM_Health #primarycarestudy report: <http://bit.ly/NASEMprimarycarestudy>

Tweet this!

#Primarycare workforce should be interprofessional, reflect the communities they serve, and ensure that the care delivered is culturally appropriate. More recommendations in the new @NASEM_Health #primarycarestudy report, out now: <http://bit.ly/NASEMprimarycarestudy>

Tweet this!

#Primarycare clinicians and teams should be able to easily access comprehensive patient data needed to provide whole-person care. More recommendations from expert committee in the new @NASEM_Health #primarycarestudy report, out now: <http://bit.ly/NASEMprimarycarestudy>

Tweet this!

Ensuring high-quality #primarycare is implemented in the U.S. requires ongoing research and leadership from the federal government. Learn more in a new @NASEM_Health #primarycarestudy report: <http://bit.ly/NASEMprimarycarestudy>

LinkedIn/Facebook

#Primarycare is foundational to our #healthcare system and critical to achieving #healthequity. High-quality primary care should be available to every individual in the United States.

Learn more from the new report, *Implementing High-Quality Primary Care: Rebuilding the Foundation of Health Care*, available now: <http://bit.ly/NASEMprimarycarestudy>

#primarycarestudy

#Primarycare provides more than one-third of all #healthcare visits in the United States – but it faces chronic underinvestment, has no federal coordinating capacity, no dedicated research support, and a shrinking workforce pipeline.

This site uses cookies. For more information on cookies visit:

<https://www.nationalacademies.org/legal/privacy>

<http://bit.ly/NASEMprimarycarestudy>

#primarycarestudy

We know what high-quality #primarycare looks like – strong relationships between care-teams & individuals, families, and communities, tailored to needs, delivered across settings. Now we have to scale it.

Learn more in a new report from the National Academies of Sciences, Engineering, and Medicine, which provides actionable recommendations for implementing high-quality primary care in the United States and rebuilding the foundation of health care: <http://bit.ly/NASEMprimarycarestudy>

#primarycarestudy

Newsletter/Email

High-quality primary care is the foundation of the health care system. It provides continuous, person-centered, relationship-based care that considers the needs and preferences of individuals, families, and communities. Without access to high-quality primary care, minor health problems can spiral into chronic disease, chronic disease management becomes difficult and uncoordinated, visits to emergency departments increase, preventive care lags, and health care spending soars to unsustainable levels.

Unequal access to primary care remains a concern, and the COVID-19 pandemic amplified pervasive economic, mental health, and social health disparities that ubiquitous, high-quality primary care might have reduced. Primary care is the only health care component where an increased supply is associated with better population health and more equitable outcomes. For this reason, primary care is a common good, which makes the strength and quality of the country's primary care services a public concern.

A new report just released by The National Academies of Sciences, Engineering, and Medicine – *Implementing High-Quality Primary Care: Rebuilding the Foundation of Health Care* – puts forth an evidence-based plan with actionable objectives and recommendations for implementing high-quality primary care in the United States. The implementation plan balances national needs for scalable solutions while allowing for adaptations to meet local needs.

This site uses cookies. For more information on cookies visit:

<https://www.nationalacademies.org/legal/privacy>

Images



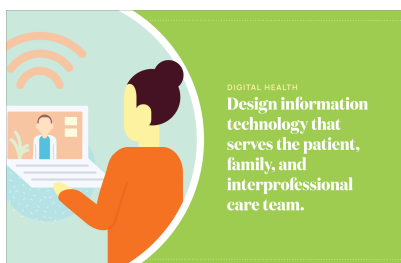
[Download \(.png, 112 kb\)](#)



[Download \(.png, 100 kb\)](#)



[Download \(.png, 89 kb\)](#)



[Download \(.png, 86 kb\)](#)



[Download \(.png, 141 kb\)](#)



[Download \(.png, 121 kb\)](#)



[Download \(.png, 104 kb\)](#)



[Download \(.png, 123 kb\)](#)

Description

An ad hoc committee, under the auspices of the National Academy of Sciences, Engineering, and Medicine, will examine the current state of primary care in the United States and develop an implementation plan to build upon the recommendations from the 1996 IOM report, "Primary Care: America's Health in a New Era", to strengthen primary care services in the United States, especially for underserved populations, and to inform primary care systems around the world. The implementation

This site uses cookies. For more information on cookies visit:

<https://www.nationalacademies.org/legal/privacy>

The expanding scope of comprehensive primary care integration to address the needs of individuals, families, and communities;

The role of primary care in achieving population health outcomes and health equity goals;

The role of team-based interprofessional practice and the range of primary care providers, including those with oral health, lifestyle, and integrative medicine expertise;

The evolving role of technological and other innovations in delivering patient-centered primary care;

Education and training needs for the changing workforce in primary care;

The evolution and sustainability of care delivery and payment models across different communities and care settings;

Efficient approaches to meaningful measurement and continuous improvement of care quality;

Changing demographics and the primary care needs and access of different patient populations, including rural and other underserved populations;

Identifying and addressing behavioral and social determinants of health and delivering community-oriented, whole person care; and

The infrastructure (workforce, data, and metrics) needed to evaluate effectiveness of innovation and its impact on health outcomes and to support data-informed decision-making.

To develop the implementation plan, the committee will consider successes and limitations of prior efforts to innovate in primary care, as well as the increasing demands and stresses on the primary care system, and will recommend ways to effectively scale and implement successful innovations and programs in US health care settings.

DIVISION

Health and Medicine Division

UNIT

Board on Health Care Services

STATUS

Completed

TYPE

Consensus Study

TOPIC

Health and Medicine

This site uses cookies. For more information on cookies visit:

<https://www.nationalacademies.org/legal/privacy>

Committee

CO-CHAIR

Linda A. McCauley

CO-CHAIR

Robert L. Phillips, Jr.

MEMBER

Asaf Bitton

MEMBER

Tumaini R. Coker

MEMBER

Carrie Colla

MEMBER

Molly Cooke

MEMBER

Jennifer E. DeVoe

MEMBER

Rebecca S. Etz

MEMBER

Susan Fisher-Owens

MEMBER

Jackson Griggs

MEMBER

Shawna Hudson

MEMBER

Shreya Kangovi

MEMBER

Christopher F. Koller

MEMBER

Alex H. Krist

MEMBER

Luci Leykum

MEMBER

Benjamin Olmedo

MEMBER

Brenda Reiss-Brennan

MEMBER

Hector P. Rodriguez

MEMBER

Mary Roth McClurg

MEMBER

Robert Weyant

STAFF OFFICER

Marc Meisnere

Sponsors

Academic Pediatric Association

This site uses cookies. For more information on cookies visit:

<https://www.nationalacademies.org/legal/privacy>

Alliance for Academic Internal Medicine

American Academy of Family Physicians

American Academy of Pediatrics

American Board of Pediatrics

American College of Physicians

American Geriatrics Society

Blue Shield of California

Commonwealth Fund

Department of Veterans Affairs

FMA Health

Health Resources and Services Administration

New York State Health Foundation

Patient-Centered Outcomes Research Institute

Samueli Institute

Society for General Internal Medicine

Past Events

11:00AM - 12:30PM (ET)
WEBINAR

JUN
29

JUNE 29, 2021

This site uses cookies. For more information on cookies visit:

<https://www.nationalacademies.org/legal/privacy>

11:00AM - 12:30PM (ET)
WEBINAR

JUNE 22, 2021

Implementing High-Quality Primary Care Webinar Series: Digital Health

11:00AM - 12:30PM (ET)
WEBINAR

JUNE 15, 2021

Implementing High-Quality Primary Care Webinar Series: The Future Workforce

11:00AM - 12:30PM (ET)
WEBINAR

JUNE 8, 2021

Implementing High-Quality Primary Care Webinar Series: Ensuring Access

11:00AM - 12:30PM (ET)
WEBINAR

JUNE 1, 2021

Implementing High-Quality Primary Care Webinar Series: Reforming Payment

LOAD MORE 

Contact

<p>CONTACT Samira Abbas</p>	<p>TELEPHONE  (202) 334-3202</p>	<p>EMAIL  PrimaryCare@nas.edu</p>
--	--	---

RESPONSIBLE STAFF OFFICERS

ADDITIONAL PROJECT STAFF

This site uses cookies. For more information on cookies visit:

<https://www.nationalacademies.org/legal/privacy>

Sharyl Nass

Tracy Lustig

Samira Abbas

 NATIONAL ACADEMY OF SCIENCES

 NATIONAL ACADEMY OF ENGINEERING

 NATIONAL ACADEMY OF MEDICINE

About Us

Our Work

Events

Contact Us

Opportunities

Publications

Visit

Current Operating
Status

E-Newsletters

[Privacy Statement](#) | [DMCA Policy](#) | [Terms of Use](#)
| [Site Map](#)

Copyright © 2021 National Academy of Sciences. All Rights Reserved.

This site uses cookies. For more information on cookies visit:

<https://www.nationalacademies.org/legal/privacy>